

envioblinds

LOW CARBON TECHNOLOGY

Coolscreen 7

Experience the next
generation sun protection

HAROL

archiproducts
AWARDS
WINNER



reddot winner 2023

Coolscreen 7, timeless elegance

Meet the Coolscreen 7 from Harol, a surface-mounted screen with cable guide system designed with perfection in mind, especially suitable for new builds and renovations. The choice between two elegant box models - rectangular or round - allows you to seamlessly match your personal style. The cable guide system makes the Coolscreen 7 ideal for installation on corner windows or windows with slim window profiles. Whether you are renovating or building a new home, this versatile screen system adapts seamlessly to any situation.



Silent operation

Thanks to optimised X-glide technology, a special profile that neutralises resonance in the box, the Coolscreen 7 operates silently. In addition, the X-glide technology guarantees a long lifespan of the fabrics, which makes the Coolscreen 7 an example of sustainable cooling.

Perfect for corner windows

Installation of the Coolscreen 7 is easy thanks to the cable guide system. This makes the system particularly suitable for mounting on corner windows or windows with narrow window profiles. With these versatile features, the Coolscreen 7 offers flexibility in integrating into various architectural configurations, making it the ideal choice for different spaces and designs.

Minimalist eco-design

The design of the Coolscreen 7 is striking, with a minimalist round or square box, with no visible screws on the outside and a seamless bottom lath. With fabrics ranging from translucent to blackout, the design offers versatile customisation options. Personalise easily with various fabric types, colours and control options for perfect integration into any environment.

Available fabrics and technical properties

	Sergé Ferrari			Copaco		
	Soltis Horizon 86	Soltis Perform 92	Soltis Opaque B92	Sergé 600	Sergé 1%	Sergé Blockout Lunar
Type	Polyester	Polyester	Polyester	Glass fibre	Glass fibre	Glass fibre
Weight approx. (g/m ²)	380	420	650	535	620	660
Thickness approx. (mm)	0.43	0.45	0.60	0.55	0.80	0.78
Transmission of direct sunlight	14%	3%	0%	5%	1%	0%
Solar factor Gtot values**	0.12 - 0.22	0.05 - 0.16	0.01 - 0.05	0.08 - 0.12	0.06 - 0.09	0.02 - 0.05



Cooling naturally thanks to Coolscreen 7

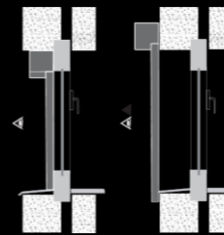
- Eco-design, clickable and using a minimum of parts
- Ultra-taut fabrics and noiseless operation
- Window areas up to 9 m²
- Quick installation
- Compact 90 mm, 110 mm or 135 mm box that fits perfectly in or on the window opening.

Premium quality

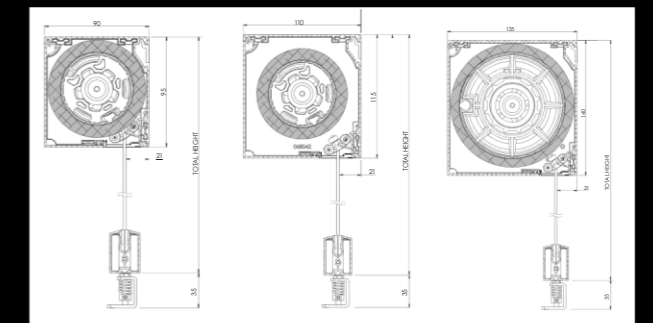
A durable all-rounder, easily efficient.

Installation

- Surface-mounted screen Coolscreen 7 can be fitted in front of the window, in the window opening or on the façade.
- Coolscreen 7 is suitable for new-build as well as renovation projects.



- Box available in 3 sizes: 90 x 95 mm, 110 x 115 mm and 135 x 140 mm.



- The 90 mm box fits perfectly into the window opening, making it blend seamlessly with the façade.

Technical ingenuity

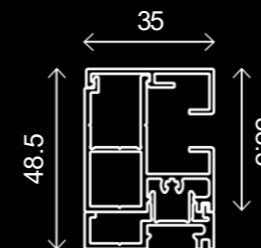
- The innovative motor bracket and Cable Control Technology ensure faster and more efficient installation and after-service.
- Harol Coolscreen 7 features Somfy's latest-generation io control as standard. This ultra-efficient screen motor works day and night and in all weather conditions. The motor features an integrated Somfy io home control receiver.
- Wide choice of high-tech fabrics that provide optimum sun protection and ensure outside visibility according to the user's needs.

Durable

- High-quality and durable system, tested up to 15,000 cycles.
- Compliant with Wind class EN13651: wind class 2.
- Box and parts are powder coated in our own environmentally friendly paint shop.
- Harol's manufacturing processes are 100% powered by green wind energy.
- Minimum parts for maximum applications.
- Fully clickable design for efficient end-of-life recycling.

Design

- Rectangular or round, minimalist box, made of extruded aluminium.
- The 90 mm box fits perfectly into the window opening, making it blend seamlessly with the façade.
- No visible welding seam on the bottom lath



Maintenance

- The box and profiles should be cleaned regularly with lukewarm water and neutral soap and then rinsed with tap water. Do not use corrosive or aggressive products, scouring pads or other abrasives.
- The closed box efficiently protects the fabric against grime and dirt.

archiproducts
AWARDS
WINNER



reddot winner 2023