

# envioblinds®

LOW CARBON TECHNOLOGY

## Robust All-round Super-insulating Surface-mounted screen SC700

The SC700 secondary screen is easy to install, wherever you like. Even if there is no sun protection in your home: secondary screens are always an option. Passive-house builders can rest assured that the **building shell need not be perforated**. Add to that the **extra durability** of the fabrics, and you will be satisfied for many years to come. Whether you opt for a **modern or classic box design**.

**QUALITY AT  
AFFORDABLE  
PRICES**

### Unique properties: surface-mounted screen SC700

Perfect for passive construction:  
the building shell is not perforated

Choice of 2 box designs:  
modern and classic

Visible installation  
in front of the window

Extensive collection of screen  
fabrics made from PVC and  
fibreglass: from very translucent  
to complete blackout

Ideal for renovations  
and new builds

The fabrics have a longer  
lifespan, thanks to the  
unique Xglide technology

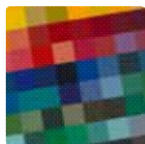
Wide fabrics so there  
is no visible seam



## Screens that perfectly match your exterior joinery

All RAL colours at a standard price.  
Harol also offers the standard textured coating colours from these window manufacturers at no extra cost:

K-7 RAL range



**aliplast**  
aluminium systems

**profel**  
THERM & DESIGN

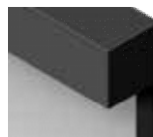
**REYNAERS**  
PARTNER

**sapa:**  
buildingsystem  
ARCHITECTURAL ALUMINIUM SOLUTIONS

Finstral

## Screen boxes that match your style

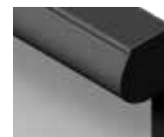
Square box



**Available sizes:**

73x73, 90x90,  
110x110

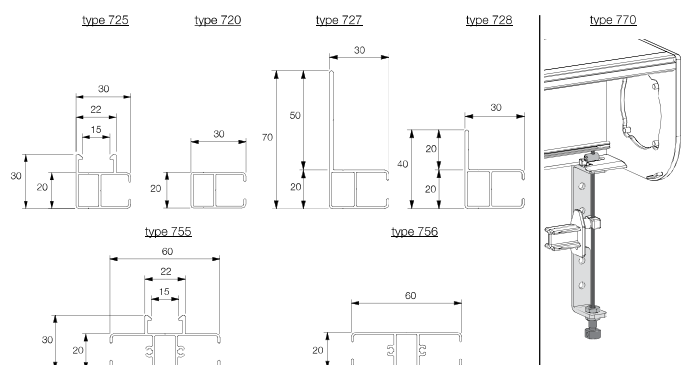
Rounded box



**Available sizes:**

73x73, 90x90,  
110x110

## The perfect guide rail for every situation



## Give your screen fabric your own touch

Have your own logo or design on your fabric, we will print it exactly the way you want it.



## Available fabrics and their properties

| Type                               | Soltis 86   | Soltis 92   | Serge 600   |
|------------------------------------|-------------|-------------|-------------|
| Weight approx. (g/m <sup>2</sup> ) | 380         | 420         | 535         |
| Thickness approx. (mm)             | 0.43        | 0.45        | 0.55        |
| Transmission of direct sunlight    | 14%         | 3 ~ 4%      | 5%          |
| G-Total values*                    | 0.15 - 0.22 | 0.05 - 0.15 | 0.01 - 0.10 |

\* Glazing C U=1.2

## Operating methods

- » Wireless: IO (standard)  
RTS
- » Electric operation: reduced price

## Maximum dimensions

- » Max. width: 3,5 m
- » Max. height: 3,5 m
- » Max. area: 9 m<sup>2</sup>



**HAROL®**

SUN PROTECTION • OUTDOOR LIVING • ROLLER SHUTTERS • GARAGE DOORS