

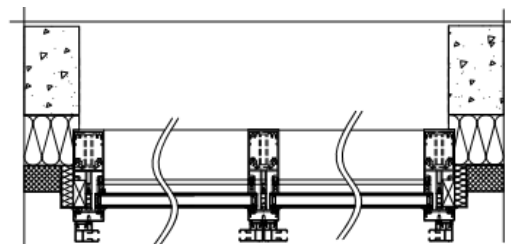
## Façade Mounted External Screens Case Study – The Woodside, *Bolnore Village*

The Woodside is a community centre, hosting pre-schools, sports clubs, and other local activities. Built in 2014, it is located on a playing field in Bolnore Village, Mid Sussex.

The requirement for solar shading was identified at the design stage but was shelved to save money. Air conditioning was installed but was still not enough to reduce unwanted solar gain in this south facing building.

Envioblinds proposed façade mounted external screens which were installed in April 2019. With widths of up to 4655mm, the system was supplied with a zip seal to keep the fabric taut and improve wind resistance. The screen specified was made from a weave of fibre glass and PVC with a G factor of 0.16 relating to the solar energy transmittance and a light transmittance of 3.6%. A wind sensor was also specified to retract the screens in the event of high winds.

The manager of Woodside was very satisfied with the installation and no technical issues have been reported.



SC800 zip façade external screen

